

I

Presto ♩ = 206

Fl. \dot{f}

Ob. ff

Cl. \dot{f} *semp. firm.*

Cor. ff

Fg. ff

Fl. *semp. firm.*

Ob. *semp. firm.*

Cl. \dot{f}

Cor. *semp. firm.*

Fg. *semp. firm.*

II

Allegro ♩ = 166

Fl. *f* \sharp^{\flat} $\dot{2}$

Ob. *f* \sharp^{\flat} $\dot{2}$

Cl. *pp* $\dot{2}$ *ff* $\dot{2}$

Cor. *f* $\dot{2}$

Fg. *f* $\dot{2}$

Fl. $\dot{2}$

Ob. \flat^{\sharp} $\dot{2}$

Cl. *p* \flat^{\sharp} $\dot{2}$

Cor. *pp* \sharp^{\flat} $\dot{2}$

Fg. \sharp^{\flat} $\dot{2}$

III

Prestissimo ♩ = 210

Fl. *ff*

Ob. *ff* *p*

Cl. *ff*

Cor. *p*

Fg. *ff*

Detailed description: This system contains five staves. The Flute staff (Fl.) has a treble clef, a key signature of one sharp (F#), and a common time signature. It begins with a series of six dotted notes on a high pitch, marked with a forte-forte (*ff*) dynamic. The Oboe staff (Ob.) has a treble clef and a common time signature. It remains silent until the third measure, where it enters with a series of six dotted notes, also marked *ff*, and then continues with a single note marked *p* (piano) with a hairpin crescendo. The Clarinet staff (Cl.) has a bass clef and a common time signature. It enters in the second measure with a series of six dotted notes, marked *ff*. The Cor (Cornet) staff has a bass clef and a common time signature. It remains silent until the third measure, where it plays a single note marked *p* with a hairpin crescendo. The Bassoon staff (Fg.) has a bass clef and a common time signature. It remains silent until the third measure, where it enters with a series of six dotted notes, marked *ff*.

Fl.

Ob. *ff*

Cl. *ff*

Cor. *ff*

Fg.

Detailed description: This system contains five staves. The Flute staff (Fl.) has a treble clef and a common time signature. It plays a rhythmic pattern of eighth notes with accents. The Oboe staff (Ob.) has a treble clef and a common time signature. It plays a rhythmic pattern of eighth notes with accents, then enters in the third measure with a series of six dotted notes. The Clarinet staff (Cl.) has a treble clef and a common time signature. It plays a rhythmic pattern of eighth notes with accents. The Cor (Cornet) staff has a bass clef and a common time signature. It plays a rhythmic pattern of eighth notes with accents. The Bassoon staff (Fg.) has a bass clef and a common time signature. It plays a rhythmic pattern of eighth notes with accents.

Restissimo ♩ = 208 IV

Fl. *f dim.*

Ob. *f dim.*

Cl. *f dim.*

Cor. *f dim.*

Fg. *f dim.*

Detailed description: This system contains five staves for woodwinds and strings. The Flute (Fl.) staff starts with a dynamic marking of *f* and a *dim.* instruction. The Oboe (Ob.) staff has a dynamic marking of *f* and a *dim.* instruction. The Clarinet (Cl.) staff has a dynamic marking of *f* and a *dim.* instruction. The Cor Anglais (Cor.) staff has a dynamic marking of *f* and a *dim.* instruction. The Bassoon (Fg.) staff has a dynamic marking of *f* and a *dim.* instruction. The staves show various musical notations including notes, rests, and slurs.

Fl. *sim.*

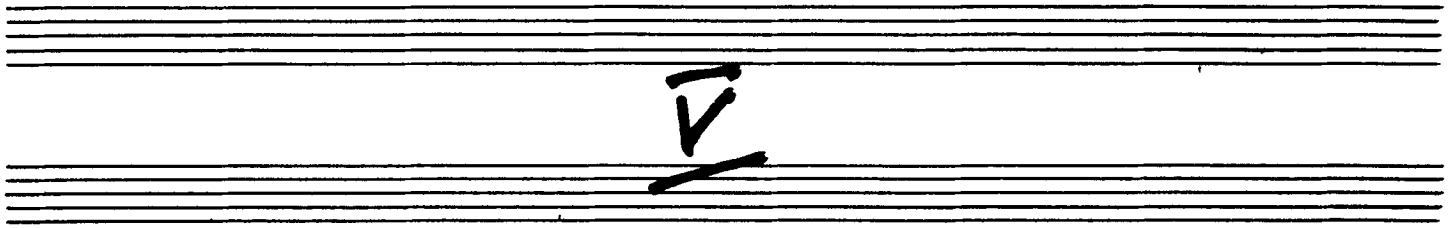
Ob. *sim.*

Cl. *sim.*

Cor. *sim.*

Fg. *sim.*

Detailed description: This system contains five staves for woodwinds and strings. The Flute (Fl.) staff has a dynamic marking of *sim.*. The Oboe (Ob.) staff has a dynamic marking of *sim.*. The Clarinet (Cl.) staff has a dynamic marking of *sim.*. The Cor Anglais (Cor.) staff has a dynamic marking of *sim.*. The Bassoon (Fg.) staff has a dynamic marking of *sim.*. The staves show various musical notations including notes, rests, and slurs.

Handwritten musical score for a piano piece. It consists of five staves. The top staff has a treble clef and a key signature of one sharp (F#). The second staff is empty. The third staff contains a melodic line with a dynamic marking of *mp* at the beginning and *sf* (sforzando) under a chord. The fourth and fifth staves are empty.Handwritten musical score for a piano piece. It consists of five staves. The top staff has a treble clef and a key signature of one sharp (F#). The second staff is empty. The third staff contains a melodic line with a *cres.* (crescendo) marking. The fourth staff contains a bass line with a *pp* (pianissimo) marking. The fifth staff contains a bass line with a *p* (piano) marking.