

B. Jorbulskis

1976

Jelvis Valanda

Ē. A. Bukonto

Moderato

Handwritten musical score for the first system. It consists of three staves: a vocal line in treble clef and a piano accompaniment in bass clef. The key signature has one flat (B-flat) and the time signature is 4/4. The tempo is marked 'Moderato'. The piano part features a steady eighth-note accompaniment. The vocal line includes a melodic phrase starting with a fermata and a dynamic marking 'A...'. There are some handwritten annotations above the vocal line, including a bracketed section with '+' signs.

Handwritten musical score for the second system, continuing the vocal and piano parts from the first system. The piano accompaniment continues with its eighth-note pattern. The vocal line has a melodic phrase with a fermata and a dynamic marking 'A...'. There are some handwritten annotations above the vocal line, including a bracketed section with '+' signs.

Handwritten musical score for the third system, featuring lyrics. The lyrics are: "Kai palietei mane ranka, pra-". The system includes a vocal line with lyrics, a piano accompaniment, and a bass line. The piano part continues with its eighth-note pattern. The vocal line has a melodic phrase with a fermata and a dynamic marking 'A...'. There are some handwritten annotations above the vocal line, including a bracketed section with '+' signs.

Handwritten musical score for the fourth system, featuring lyrics. The lyrics are: "sišviete uola pilka ir skleidėsi gėlin žadėta valan-". The system includes a vocal line with lyrics, a piano accompaniment, and a bass line. The piano part continues with its eighth-note pattern. The vocal line has a melodic phrase with a fermata and a dynamic marking 'A...'. There are some handwritten annotations above the vocal line, including a bracketed section with '+' signs.

- da .

Būvāitu man skaudi klaida, bet

Handwritten musical notation for the first system. The vocal line is in a treble clef with a key signature of one flat (Bb) and a 4/4 time signature. It features a melodic line with various note values and rests, including a long note with a fermata. The piano accompaniment consists of a grand staff with chords and arpeggiated figures in both hands.

liejāsī sviesa keista ir paslāptā visur jāucīn dabar gre-

Handwritten musical notation for the second system. The vocal line continues with a similar melodic style. The piano accompaniment features more complex chordal structures and arpeggios, with some notes marked with a sharp sign (#).

- ta .

*l'istesso tempo* = d

Pritrūko tau jē-

Handwritten musical notation for the third system. The vocal line has a more rhythmic feel. The piano accompaniment includes triplets and complex chordal patterns, with some notes marked with a sharp sign (#) and a fermata.

- gys zvaigždem' nūset jānūstē, dangsteisi paža-

Handwritten musical notation for the fourth system. The vocal line concludes with a melodic phrase. The piano accompaniment features a series of chords and arpeggios, with some notes marked with a sharp sign (#).

-das puikia skara,

o upė ir žie-

Handwritten musical score for the first system. The vocal line (top staff) contains the lyrics "-das puikia skara," and "o upė ir žie-". The piano accompaniment (bottom two staves) features a complex texture with triplets and various chordal structures. The key signature has one flat (B-flat), and the time signature is 3/8.

-dai man jau nebeis paklysti,

nes gaubia man ta-

Handwritten musical score for the second system. The vocal line (top staff) contains the lyrics "-dai man jau nebeis paklysti," and "nes gaubia man ta-". The piano accompaniment (bottom two staves) continues with complex textures, including triplets and various chordal structures. The key signature has one flat (B-flat), and the time signature is 3/8.

Kus šviesa žydra.

Kai palietei

Handwritten musical score for the third system. The vocal line (top staff) contains the lyrics "Kus šviesa žydra." and "Kai palietei". The piano accompaniment (bottom two staves) continues with complex textures, including triplets and various chordal structures. The key signature has one flat (B-flat), and the time signature is 3/8.

mane

ranka,

prasišvietė

Handwritten musical score for the fourth system. The vocal line (top staff) contains the lyrics "mane", "ranka,", and "prasišvietė". The piano accompaniment (bottom two staves) continues with complex textures, including triplets and various chordal structures. The key signature has one flat (B-flat), and the time signature is 3/8.

uola pilka ir skleidėsi

Handwritten musical score for the first system. The vocal line is on a single staff with a treble clef and a key signature of one flat (B-flat). The lyrics 'uola pilka ir skleidėsi' are written above the notes. The piano accompaniment consists of two staves: the upper staff has a treble clef and the lower staff has a bass clef. The piano part features a steady eighth-note accompaniment in the bass and chords in the treble. There are four measures in total.

gėlių žadeta valanda.

Handwritten musical score for the second system. The vocal line is on a single staff with a treble clef and a key signature of one flat. The lyrics 'gėlių žadeta valanda.' are written above the notes. The piano accompaniment consists of two staves: the upper staff has a treble clef and the lower staff has a bass clef. The piano part features a steady eighth-note accompaniment in the bass and chords in the treble. There are four measures in total.

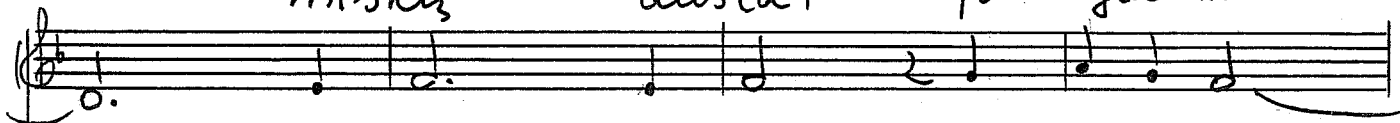
seniai tavęs

Handwritten musical score for the third system. The vocal line is on a single staff with a treble clef and a key signature of one flat. The lyrics 'seniai tavęs' are written above the notes. The piano accompaniment consists of two staves: the upper staff has a treble clef and the lower staff has a bass clef. The piano part features a steady eighth-note accompaniment in the bass and chords in the treble. There are four measures in total.

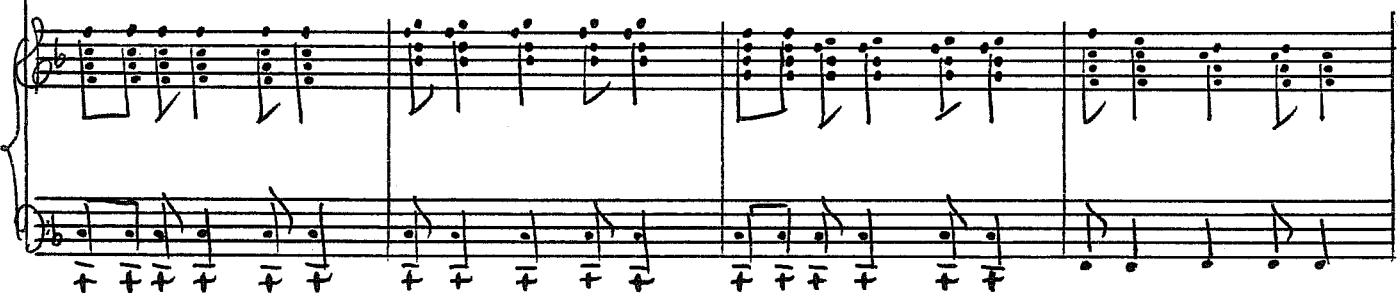
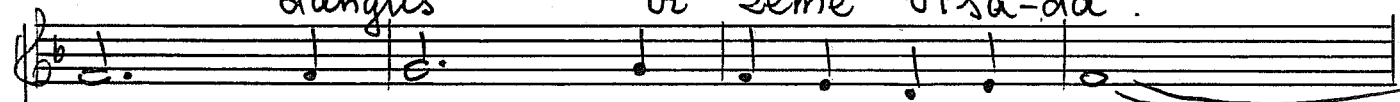
šalia nėra, bet liko man

Handwritten musical score for the fourth system. The vocal line is on a single staff with a treble clef and a key signature of one flat. The lyrics 'šalia nėra, bet liko man' are written above the notes. The piano accompaniment consists of two staves: the upper staff has a treble clef and the lower staff has a bass clef. The piano part features a steady eighth-note accompaniment in the bass and chords in the treble. There are four measures in total.

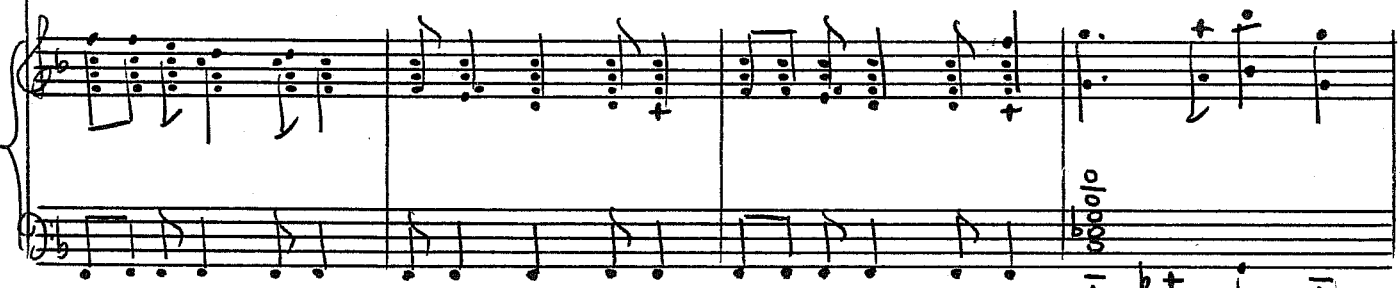
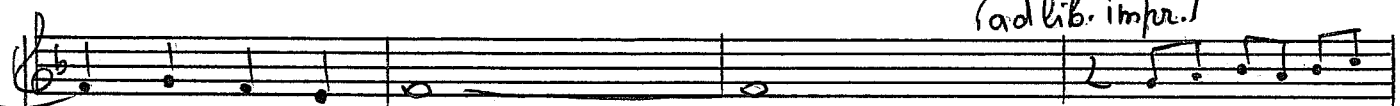
mišķis austra, prabyla man



langus ir šeme visa-da.



*ad lib. impr.*



Handwritten musical score for the first system. It consists of a vocal line on a single staff and a piano accompaniment on two staves. The piano part features complex chords with many accidentals and some ornaments. The key signature has one sharp (F#) and one flat (Bb).

Handwritten musical score for the second system. It includes a vocal line and piano accompaniment. The piano part has several chords with plus signs (+) and some accidentals. A tempo marking "d'istesso tempo =!" is written below the piano staff.

Handwritten musical score for the third system. It features a vocal line and piano accompaniment. The piano part has a 4/4 time signature and contains several chords with plus signs (+) and some accidentals.

Handwritten musical score for the fourth system. It includes a vocal line with lyrics and piano accompaniment. The lyrics are: "senia taves šalia nėra, bet lixo man miš-". The piano part has several chords with plus signs (+) and some accidentals.

-Kuz aušra, prabyla man dangus ir žemė visada.

Handwritten musical notation for the first system. It consists of three staves: a vocal line in treble clef, a piano accompaniment in treble clef, and a piano accompaniment in bass clef. The key signature has one flat (B-flat). The vocal line begins with a treble clef and a key signature of one flat. The piano accompaniment in the treble clef starts with a key signature of one flat and a common time signature. The piano accompaniment in the bass clef starts with a key signature of one flat and a common time signature. The system concludes with a double bar line.

Handwritten musical notation for the second system. It consists of three staves: a vocal line in treble clef, a piano accompaniment in treble clef, and a piano accompaniment in bass clef. The key signature has one flat (B-flat). The vocal line begins with a treble clef and a key signature of one flat. The piano accompaniment in the treble clef starts with a key signature of one flat and a common time signature. The piano accompaniment in the bass clef starts with a key signature of one flat and a common time signature. The system concludes with a double bar line.

Handwritten musical notation for the third system. It consists of three staves: a vocal line in treble clef, a piano accompaniment in treble clef, and a piano accompaniment in bass clef. The key signature has one flat (B-flat). The vocal line begins with a treble clef and a key signature of one flat. The piano accompaniment in the treble clef starts with a key signature of one flat and a common time signature. The piano accompaniment in the bass clef starts with a key signature of one flat and a common time signature. The system concludes with a double bar line.

Four empty musical staves at the bottom of the page, consisting of five-line staves without any notation.